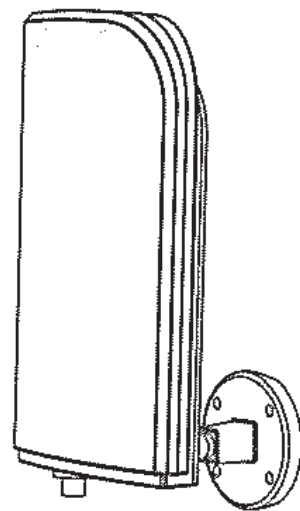


Digital Outdoor Antenna

MODEL: DA-5600

Thanks for your purchasing this DA-5600 Digital Outdoor Antenna.
Before your installation,
Please read this manual carefully and keep this manual
for further information.



INTRODUCTION

DA-5600 is an antenna specially designed for digital terrestrial broadcasting reception. With state of the art low noise amplifier technology and filter circuitry, it will provide best reception. And compact and stylish housing, it can be accompany with your digital STB.

With UV protected housing and water-proof sealing, DA-5600 can be installed on a wall, window-shelter, and with bundle pole fixing kit, DA-5600 can be installed on the wooden or metal pole. With special multi-directional tunable mechanism, you can turn your antenna to any direction to get the best reception. And also with the indoor standing kit, you can use the antenna indoor.

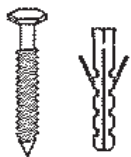
Feature:

- Built-in FM trap filter
- Water-proof and anti-UV housing
- Compact and Stylish design
- Multi-installation methods, wall-mounted or pole-mounted installation
- UHF 470~870MHz
- VHF 46~88, 108~230MHz
- Gain 20±3dB
- Low noise amplifier technology

PACKAGE CONTENT

Please check the content before your installation

1. Wall mounting package (plastic poleX4, screw X4)
2. Pole Mounting kits(U type screws X2, butterfly type washer X4)
3. Power inserter
4. Coaxial Cable(F male to IEC Female) X 1
5. AC Adaptor X1
6. Multi-directional fixing base
7. Standing Unit
8. DA-5600 main unit
9. Operational Manual



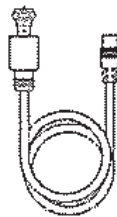
Wall Mounting kits



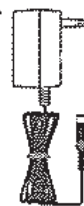
Pole Mounting kits



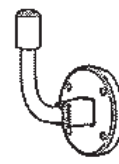
Power Inserter



Coaxial Cable



AC Adaptor



Fixing Base



Standing Unit



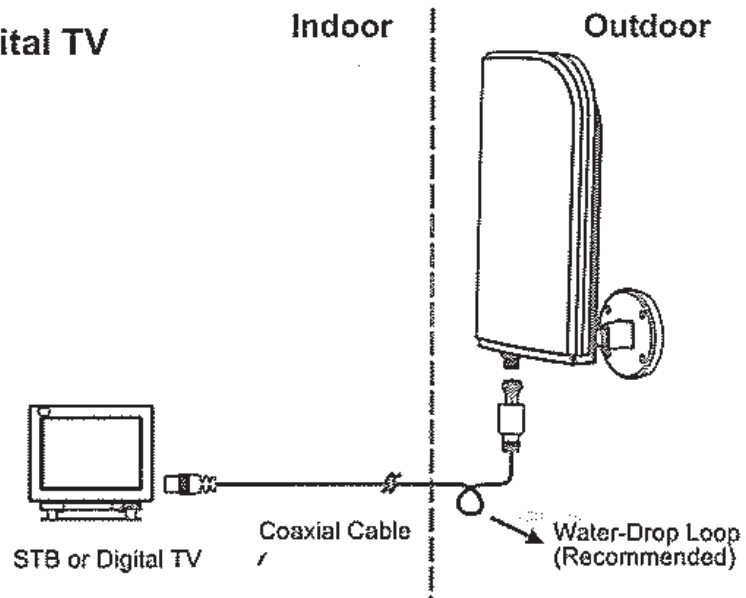
Main unit

Notice:

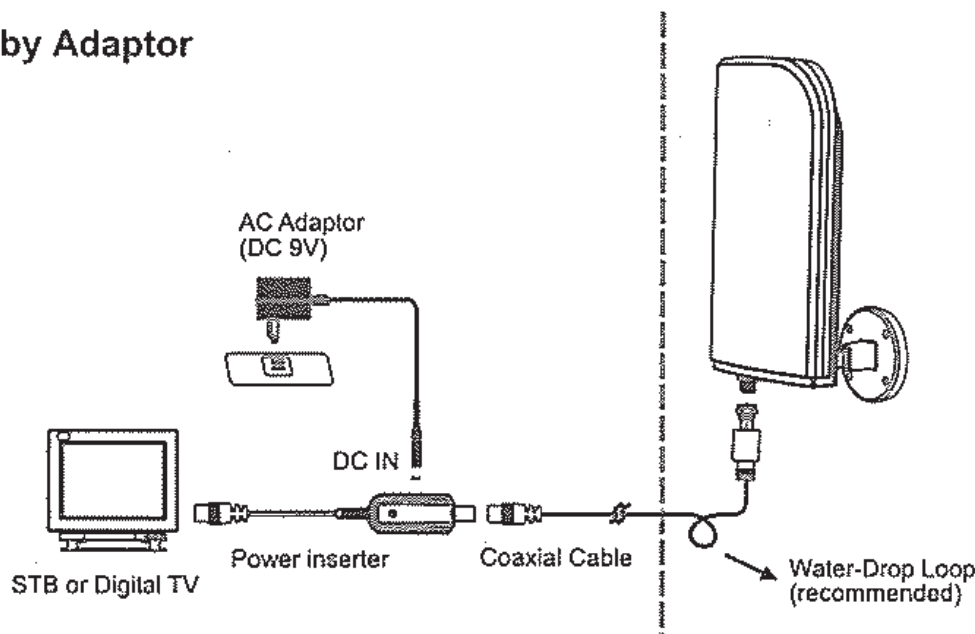
For the best reception, Please check the following conditions.

1. Keep away from the source of interferences: keep away from heavy power consumption devices, such as air conditioner, elevator, hair dryer and microwave oven...etc.
2. Installed as high as possible: In the case of digital terrestrial reception, if there is interruption between antenna and transmission tower, it will cause the signal loss. Avoid any interruption, the reception will be better.
3. Place the antenna near windows when use the antenna in indoor environment. If the Windows screen is made of metal material, it will become as a signal shielding. Place the antenna away from those metal material windows screen.
4. For outdoor application, you may need to get a longer coaxial cable. Please check with your local hardware store for longer coaxial cable.
5. For your own protection, it is recommended to hire a certified antenna installer when you need to install the antenna outdoor.
6. When use power adaptor for antenna powering, please turn off the coaxial cable powering function form your STB (or TV).
7. When uses the coaxial cable powering function form your STB (or TV), please disconnect the power adaptor and power inserter.

Powered by STB or Digital TV



Powered by Adaptor



The normal installation is like the above scheme.

Condition 1, Powering the Antenna by STB or Digital TV and installation method (mounting method is the same in the following pages)

Step 1. Take out the main unit DA-5600

Step 2. Take out the multi-directional base. Fixed it on the wooden pole (as figure, please check the follow paragraph for more information)

Step 3. Fix the main unit to the multi-directional base

Step 4. Take the Coaxial Cable (IEC male to F female) connect the IEC Male end to your Set Top Box or TV Set (IEC Female) and the F-Female to the F-female End of the DA-5600.

Please note: all the connections should be fixed. It is recommended that you should have a water-drop loop at the end of cable before entering your home.

Step 5. Adjust the orientation of DA-5600.

Condition 2, Powering the antenna by AC adaptor (in cases that there is no DC power out from the STB or Digital TV, you need to do this installation)

When you finished the installation, you can use your Set Top Box to check the signal strength and quality. If the quality is not good enough to have good picture, you can move the antenna to get the best reception position, when you find the best position, please fixed it. If not, you can change the reception direction by adjust the main unit.

Indoor /Outdoor Wall Mounted installation

Step 1. Mark the fixing position with a pencil or pen (please use the multi-directional base to mark the position)

Please note, if you want to install on a wooden wall, please follow the step below

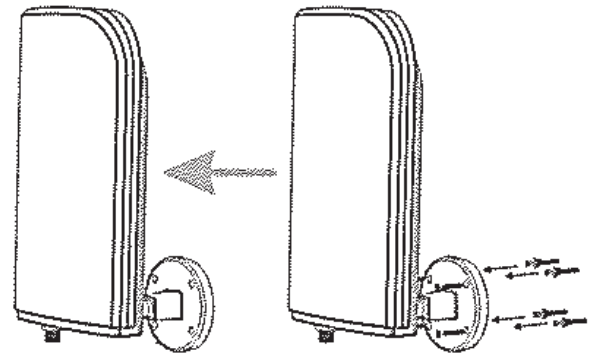
Step 2. Take out the screws attached, use a screw driver to fix these screws through the base and fix it on the wall.

Step 3. Fix the main unit on the multi-directional base

Step 4. Take the power inserter; connect the IEC Male end to your Set Top Box or TV Set (IEC Female). Take the coaxial cable (F to IEC male); connect the F-male End to the DA-5600 and IEC male to the Power inserter (marked with Antenna). *Please note: all the connection should be fixed. It is recommended that you should have a water-drop loop at the end of cable before entering your home.)*

Step 5. Take out the AC-DC adaptor; connect the barrel end to the DC input of Power inserter, AC end to the AC Outlet. *Please note: use only supplied AC adaptor.*

Step 6. Adjust the orientation of DA-5600.



If you want to hook this unit onto a brick wall or RC wall, please follow the steps bellow

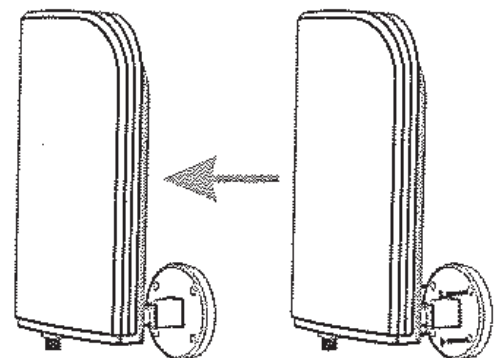
Before the following step, please make sure that you have enough protection when you try to drill on the wall.

Step 1. Take the electric drill, using 5.8mm drill bit. Drill the depth to 35mm. Then clean the hole. *(Please note, when you use the electric drill, you should better to wear the protection device. And the drill bit should be fixed; otherwise there will be a serious injury happened when the bit is broken or loose).*

Step 2. Take out the plastic pole; insert it into the hole made by step1.

Step 3. Take out the screws; use a screw driver to fix them through the base into the plastic pole.

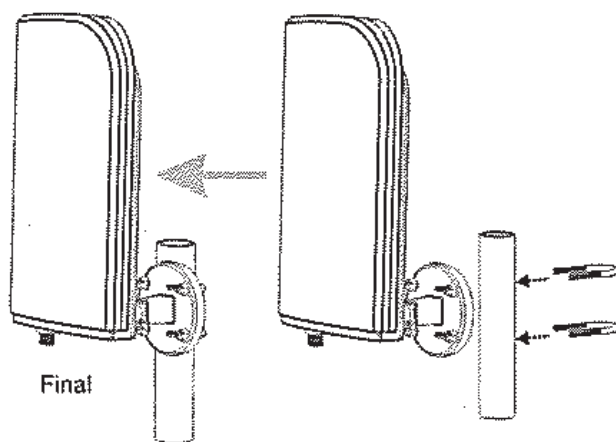
Step 4. Fix the main unit on the multi-directional base.



- Step 5.** Take the power inserter; connect the IEC Male end to your Set Top Box or TV Set (IEC Female). Take the coaxial cable (F to IEC male); connect the F-male End to DA-5600 and IEC male to the Power inserter (marked with Antenna). **Please note: all the connection should be fixed. It is recommended that you should have a water-drop loop at the end of cable before entering your home when install the antenna outdoor.**
- Step 6.** Take out the AC-DC adaptor; connect the barrel end to the DC input of Power inserter, AC end to the AC Outlet. Please note use only supplied AC adaptor
- Step 7.** Adjust the orientation of DA-5600.

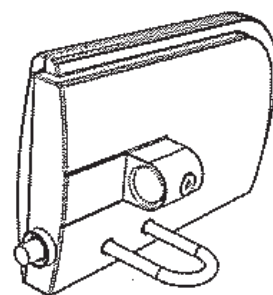
Pole Mounted application

- Step 1.** Take a wooden or metallic mast (pole).
- Step 2.** Take the pole mounting kits.
- Step 3.** Hooks 2 U type screws on the pole. Take the multi-directional base through screws. Fixed 4 butterfly type washers and fixed them.
- Step 4.** Fix the main unit on the multi-directional base
- Step 5.** Take the power inserter; connect the IEC Male end to your Set Top Box or TV Set (IEC Female). Take the coaxial cable (F to IEC male), connect the F-male End to the DA-5600 and IEC male to the power inserter (marked with Antenna). **Please note: all the connection should be fixed. It is recommended that you should have a water-drop loop at the end of cable before entering your home when install the antenna outdoor.**
- Step 6.** Take out the AC-DC adaptor; connect the barrel end to the DC input of Power inserter, AC end to the AC Outlet. Please note use only supplied AC adaptor.
- Step 7.** Adjust the orientation of DA-5600.



Indoor Use

There is an indoor standing unit, you can use it to let this antenna standing on table or TV set. Please be noticed that in this installation you may need to adjust the antenna direction to get the best signal reception.



TROUBLE SHOOTING

- If you can not get the digital programs as you expect. Please check following conditions:
 - Check the connection. Make sure all the connection is correct.
 - Check the antenna powering (coaxial cable powering) function of your STB. DA-5600 is an active antenna. You will need to enable the antenna powering function. (Please check you STB's manual for operation.)
- Adjusting the direction of antenna to find the best reception angle.
- Adjusting the antenna from vertical position to horizontal position, and try different directions.