

SECTION 2 EXPLODED VIEWS

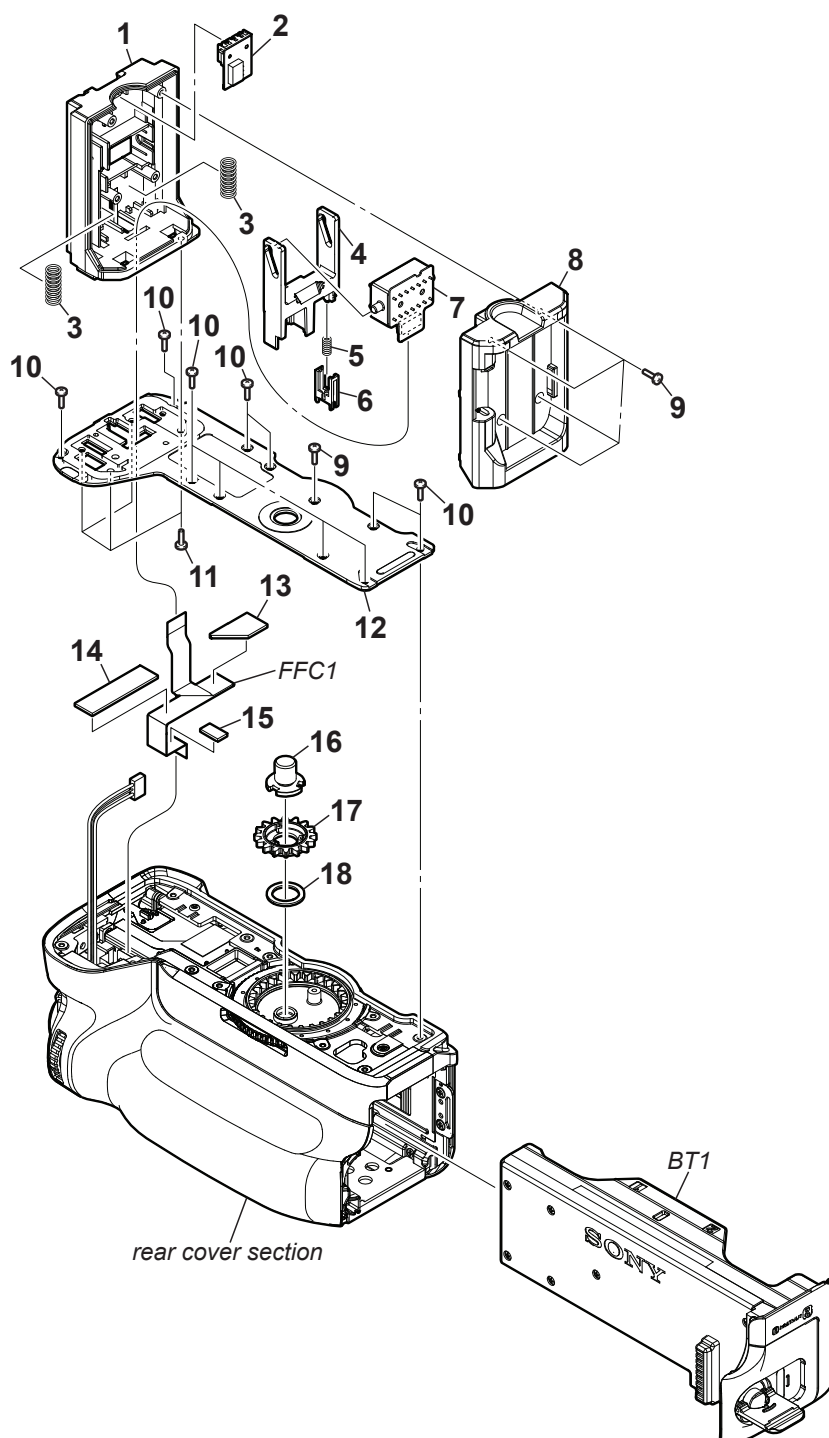
Note:

- -XX and -X mean standardized parts, so they may have some difference from the original one.
- Items marked “*” are not stocked since they are seldom required for routine service. Some delay should be anticipated when ordering these items.
- The mechanical parts with no reference number in the exploded views are not supplied.
- Color Indication of Appearance Parts Example:
KNOB, BALANCE (WHITE) . . . (RED)

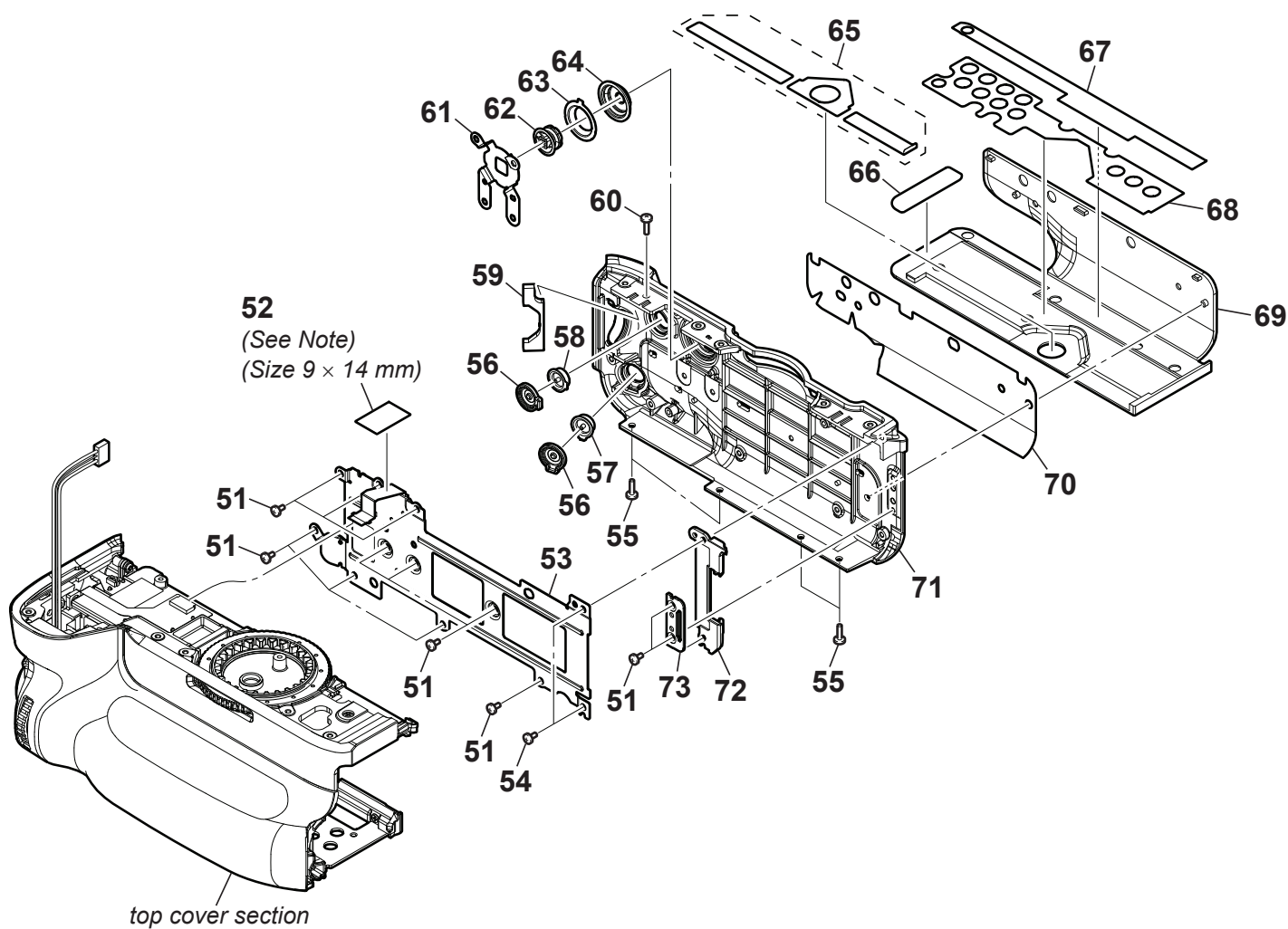
↑
Parts Color

↑
Cabinet's Color

2-1. BT TERMINAL SECTION

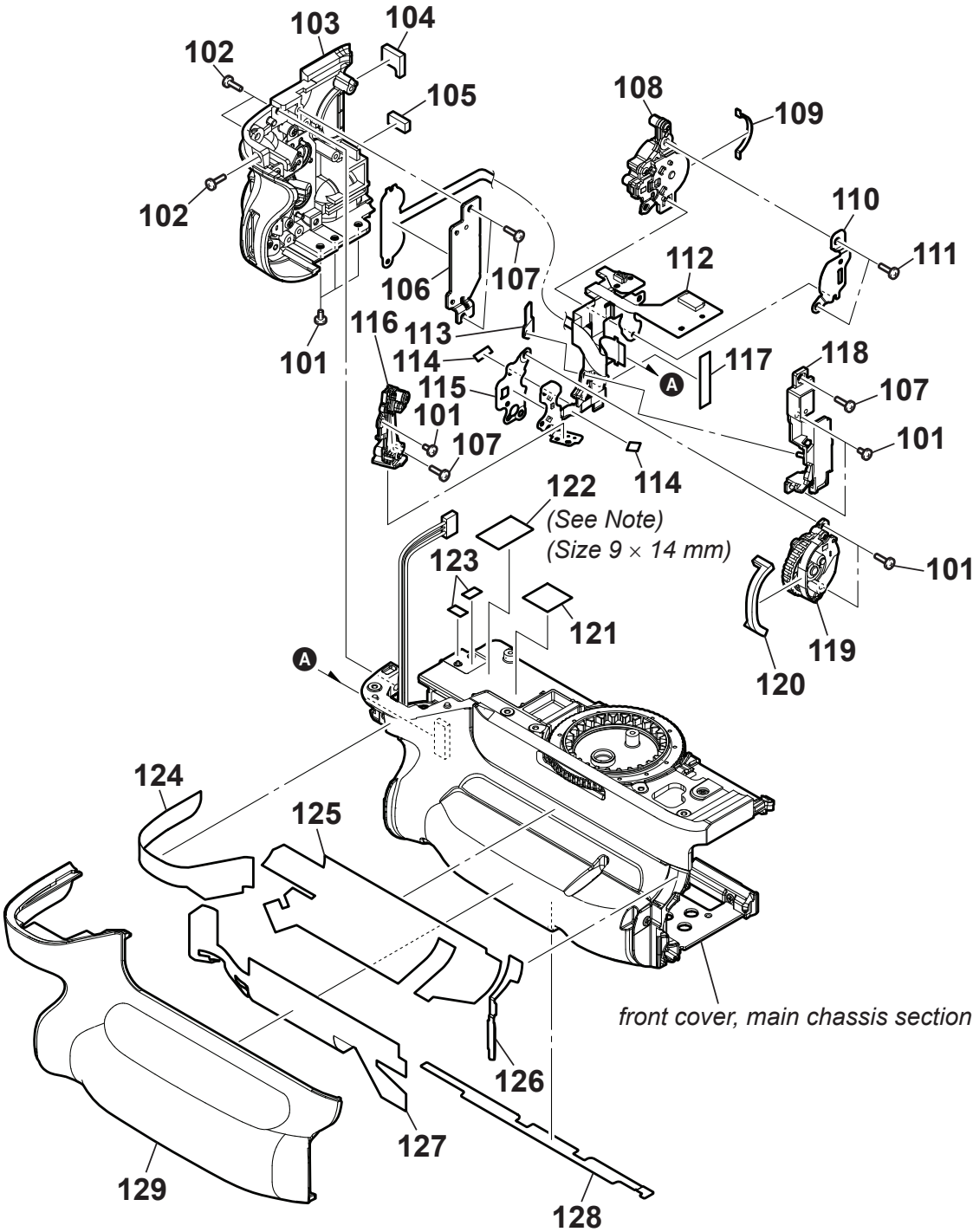


2-2. REAR COVER SECTION



Note: When replacing Ref. No. 52, cut the new part to the specific size indicated in the figure before use.

2-3. TOP COVER SECTION



Note: When replacing Ref. No. 122, cut the new part to the specific size indicated in the figure before use.

2-4. FRONT COVER, MAIN CHASSIS SECTION

