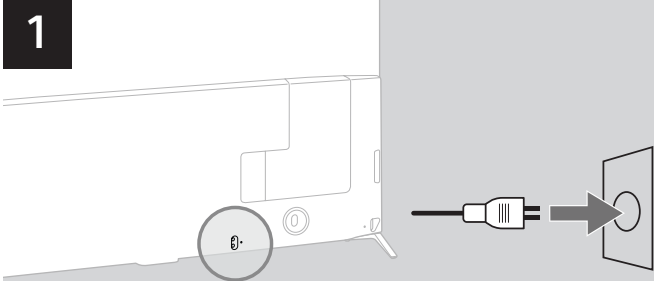


Remote Control Help guide

Applicable Series: All BRAVIA Series

Reboot the TV

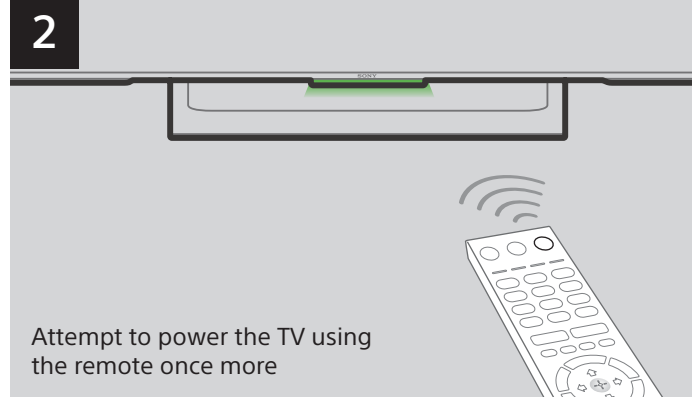
1



Unplug your TV, wait 30 seconds then plug the cable back in.

00:30

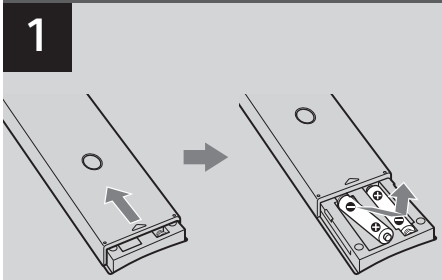
2



Attempt to power the TV using the remote once more

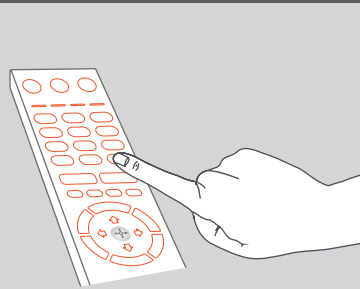
Reset the remote

1



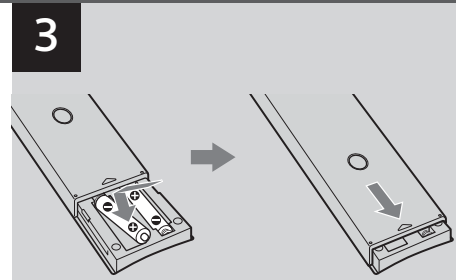
Remove the batteries from the remote

2



Press each of the buttons and make sure they aren't stuck

3



Replace the batteries

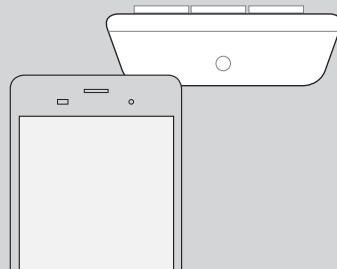
BRAVIA Remote Test

1



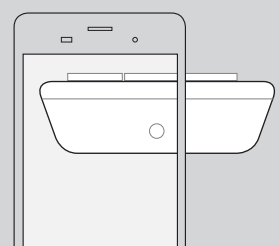
Grab a camera (a phone camera will work)

2



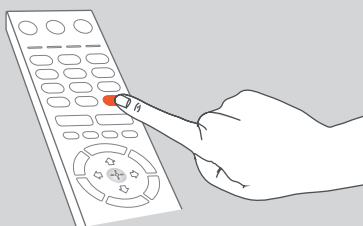
Point the front end of the remote control at the camera lens

3



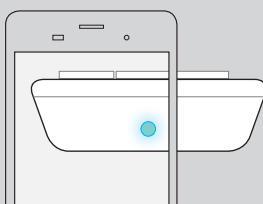
Look at the viewfinder or LCD screen

4



Press and hold one of the buttons on the remote control

5



If the remote control is sending a signal, you should see a light when you press buttons on the remote control

